

TOYOTA COROLLA XLI 1.8L HYBRID





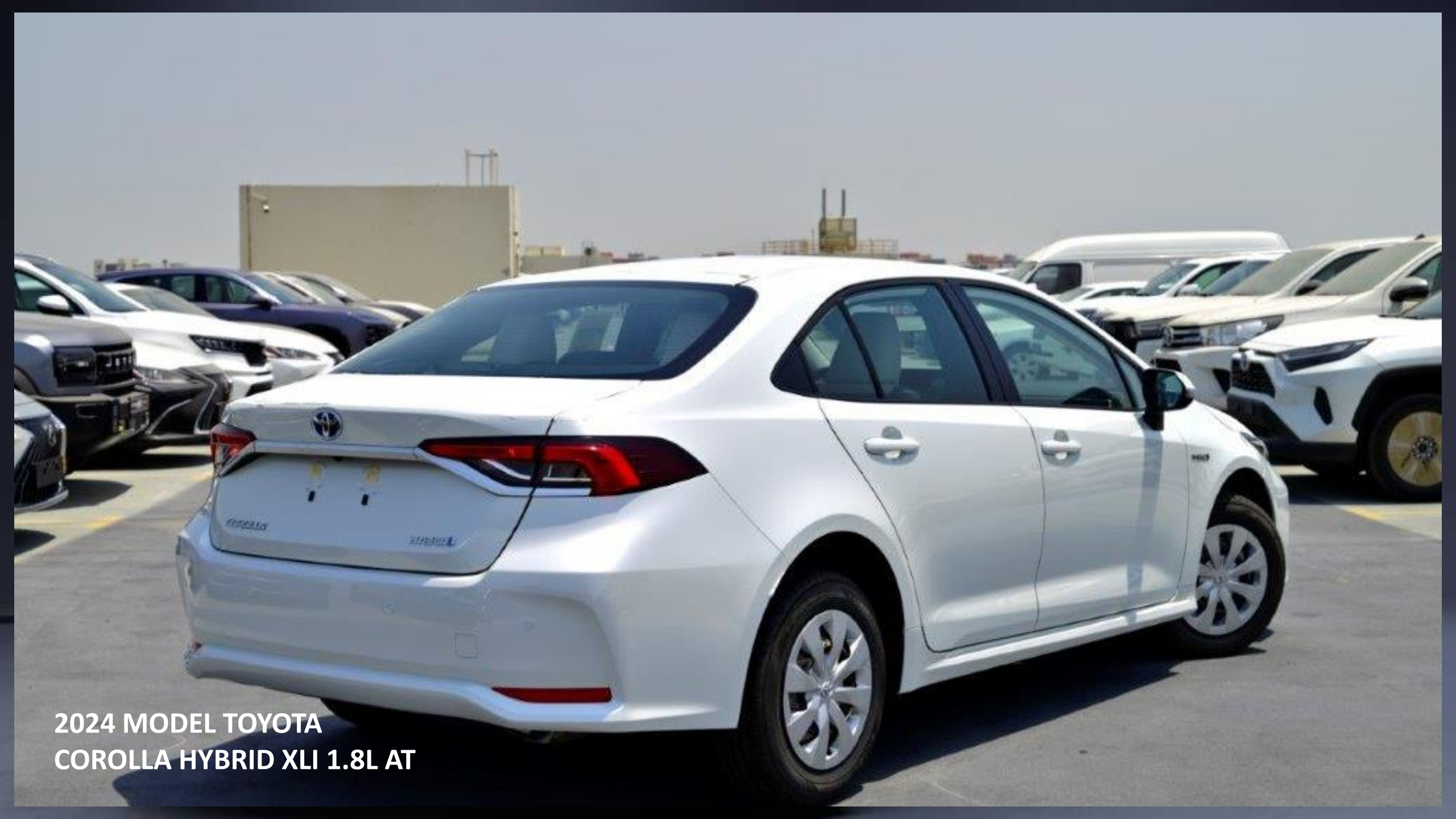
**2024 MODEL TOYOTA COROLLA
HYBRID XLI 1.8L AT**



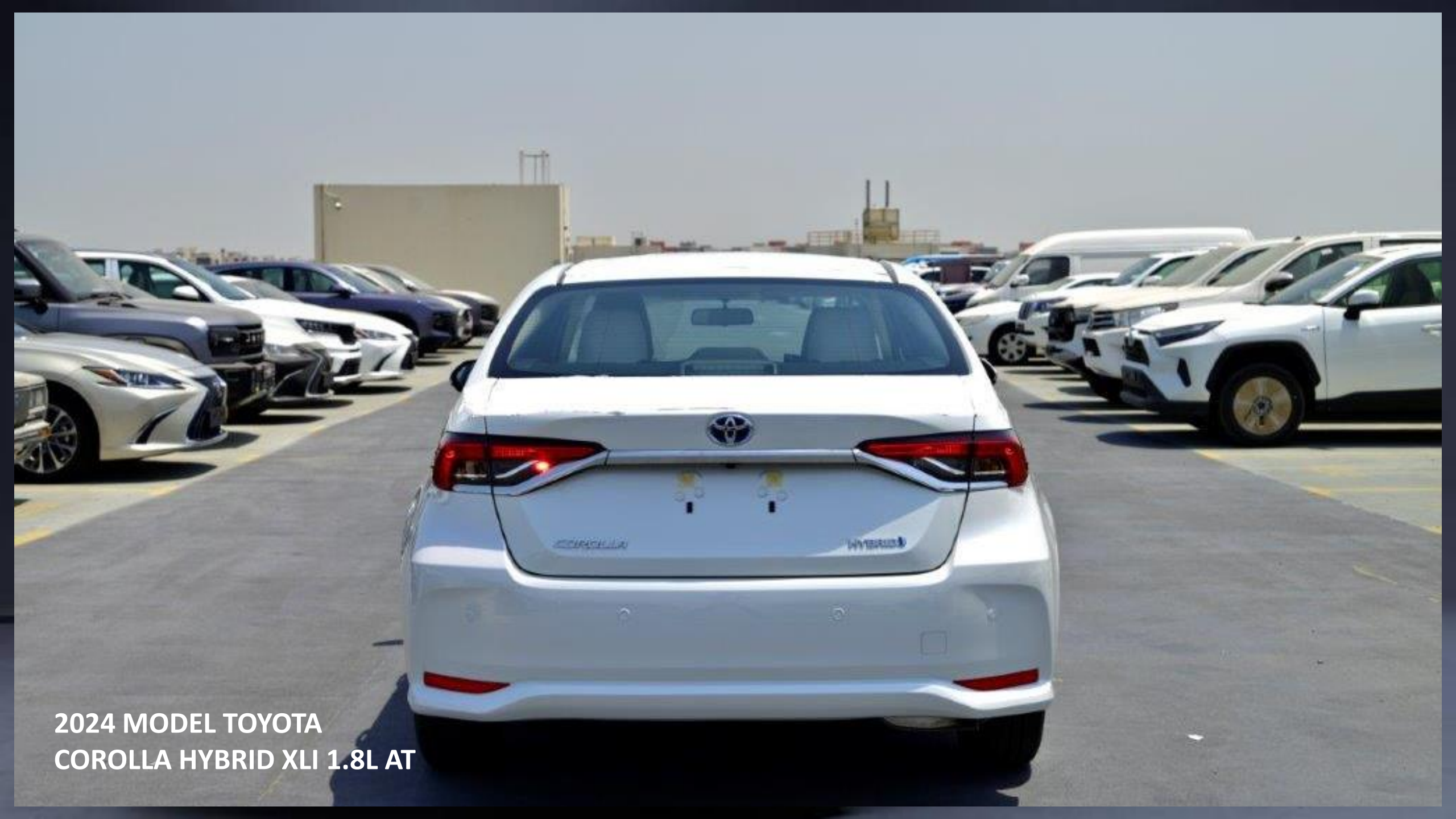
**2024 MODEL TOYOTA COROLLA
HYBRID XLI 1.8L AT**

A side-profile photograph of a white 2024 Toyota Corolla Hybrid XLI 1.8L AT. The car is parked in a lot with other vehicles in the background. The car features a 'COROLLA' badge on the front fender and a 'HYBRID' badge on the rear door. The wheels are silver multi-spoke alloy wheels. The background shows a clear blue sky, a large tan building, and other cars parked in rows.

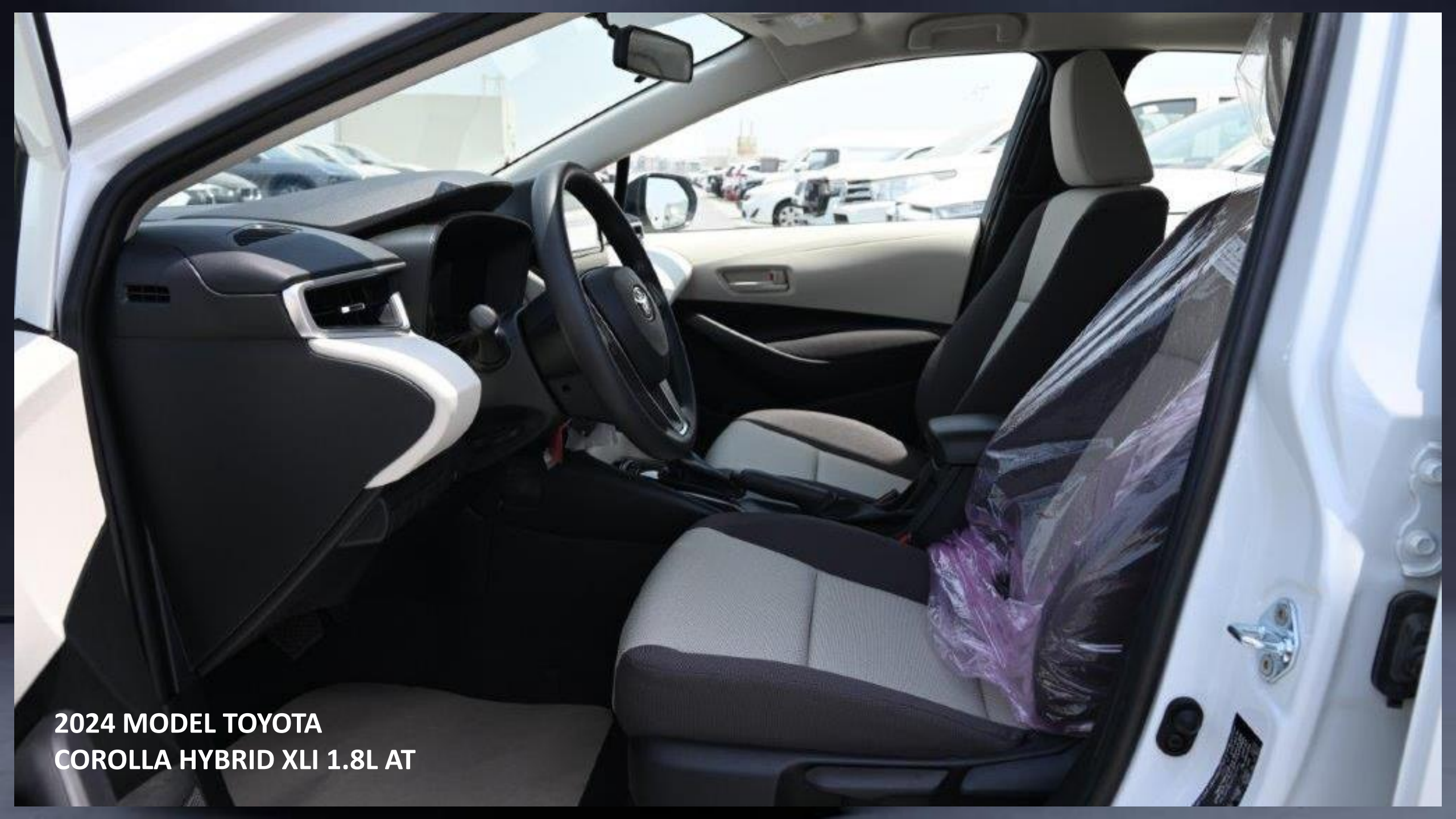
2024 MODEL TOYOTA
COROLLA HYBRID XLI 1.8L AT



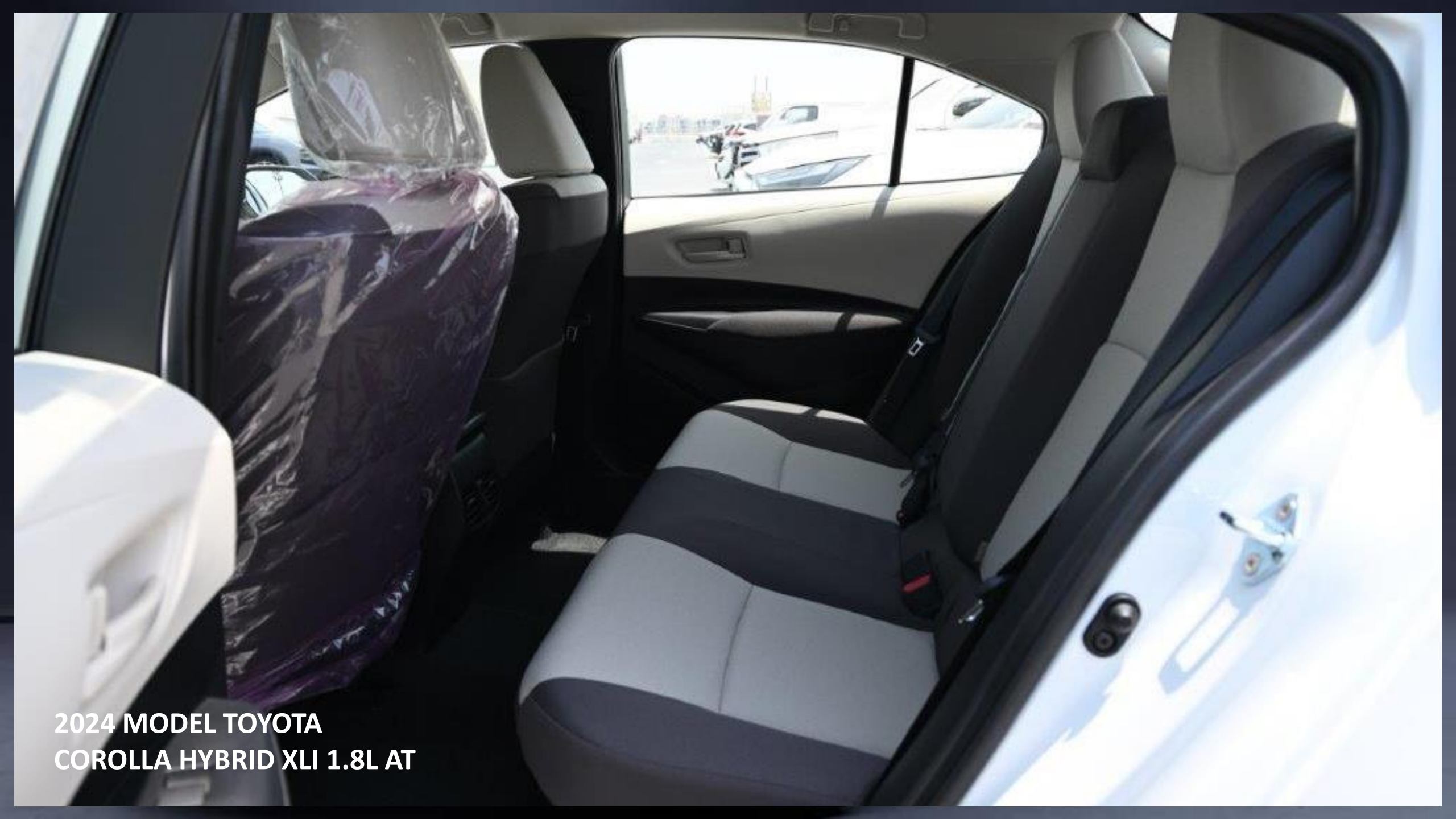
**2024 MODEL TOYOTA
COROLLA HYBRID XLI 1.8L AT**



2024 MODEL TOYOTA
COROLLA HYBRID XLI 1.8L AT



**2024 MODEL TOYOTA
COROLLA HYBRID XLI 1.8L AT**



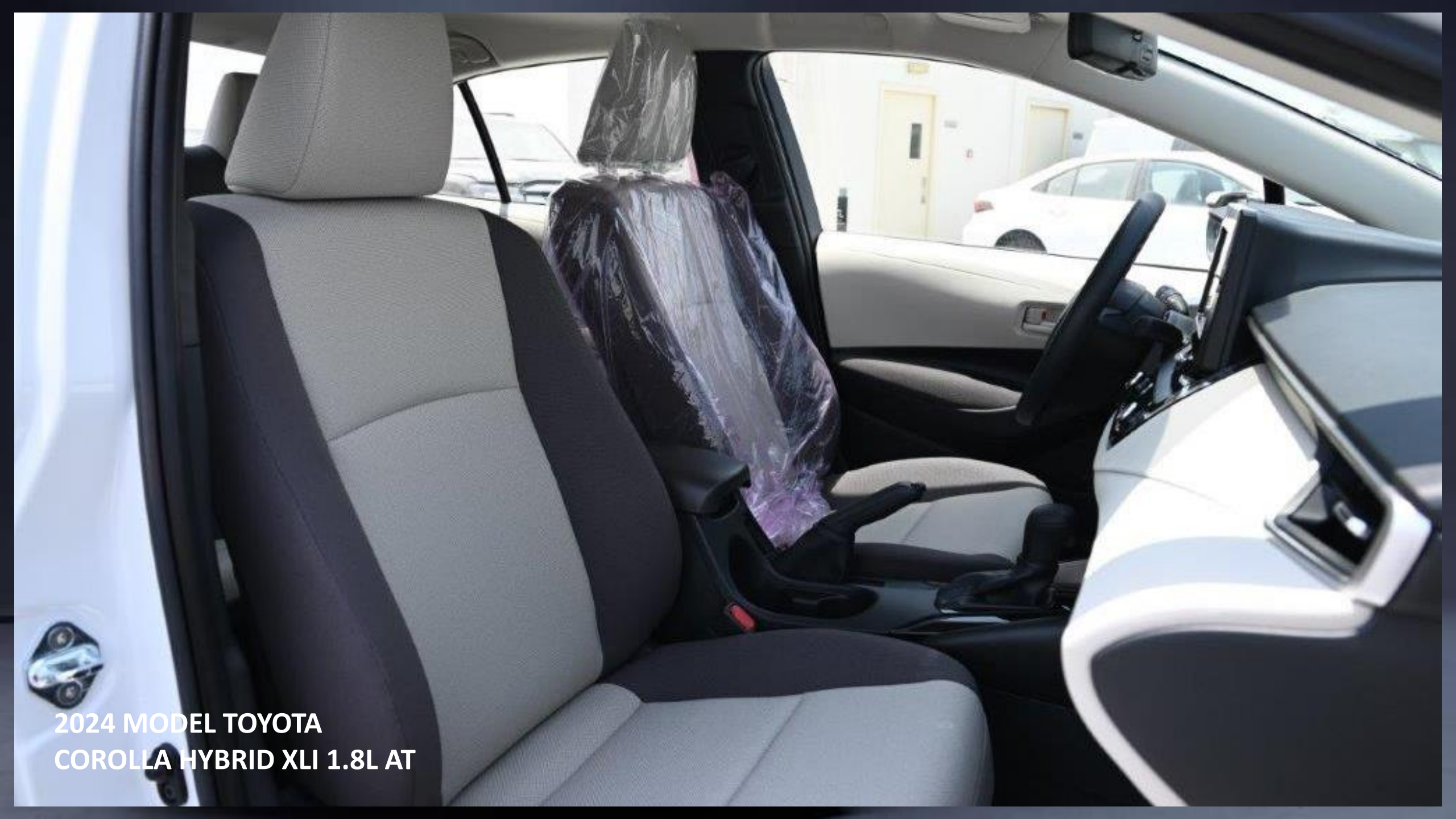
**2024 MODEL TOYOTA
COROLLA HYBRID XLI 1.8L AT**



**2024 MODEL TOYOTA
COROLLA HYBRID XLI 1.8L AT**

A close-up photograph of the center console of a 2024 Toyota Corolla Hybrid XLI 1.8L AT. The gear shift is a black leather-wrapped automatic shifter with a vertical seam and stitching down the center. To the left of the shifter, the letters 'P R N D B' are printed vertically in a light blue color. Above the shifter, a black rectangular panel features the text 'DRIVE MODE' in white. The surrounding interior is black plastic, and the seats are upholstered in a grey and white patterned fabric. A piece of clear plastic is visible in the upper left corner.

2024 MODEL TOYOTA
COROLLA HYBRID XLI 1.8L AT



**2024 MODEL TOYOTA
COROLLA HYBRID XLI 1.8L AT**

2024 MODEL TOYOTA COROLLA HYBRID XLI 1.8L AUTOMATIC

TECHNICAL FEATURES

ENGINE: 1.8L, 4-CYLINDERS

MAX OUTPUT: 121 HP (COMBINED)/ 6000 RPM

MAX TORQUE: 142 NM / 3600 RPM

ELECTRONIC CONTINUOUS VARIABLE TRANSMISSION (E-CVT)

TIRES SIZE: 195/65R15

DIMENSIONS L - W - H (MM): 4630 - 1780 - 1455

FUEL EFFICIENCY : 27.6 KM/L

FUEL TANK CAPACITY: 43L

EXTERIOR FEATURES

15" STEEL WHEEL

HALOGEN HEADLAMPS

POWER SIDE VIEW MIRRORS, BODY COLORED, TURNING

SIGNAL LIGHT, MANUAL FOLDING MIRRORS

BLACK WITH CHROME FRONT GRILL

INTERIOR FEATURES

FABRIC SEATS

4.2 INCH MULTI-INFORMATION DISPLAY

STEERING WHEEL WITH AUDIO CONTROLS

AUTOMATIC CLIMATE CONTROL

REAR AC VENT

7 INCH TOUCH SCREEN AUDIO SYSTEM WITH BLUETOOTH

APPLE CARPLAY SYSTEM*

USB PORT*

4 SPEAKERS

SAFETY & CONVENIENCE FEATURES

DRIVER AIRBAG, FRONT PASSENGER AIRBAG, FRONT SIDE

AIRBAGS

KEYLESS ENTRY "REMOTE CONTROL"

REAR VIEW CAMERA

REAR PARKING SENSORS

CRUISE CONTROL

FLOOR MATS (CARPET)

LOAD SPACE COVER (PLASTIC)

SAFETY REGULATION KIT

TOYOTA COROLLA XLI 1.8L HYBRID



CONTACT US

Address: Block 3, Showroom no.25, Al Awir, Ras Al khor Auto Market, Dubai, UAE

Land Line: +971 43332623

Email: info@saharamotorsuae.com

